



# Technical Specifications Pre-Glued PVC Edgebanding

## Product Name

Pre-glued PVC Edgebanding

## Producer

### TECE Dekor A.S.

BOSB 75. Yil Bulvari No:12 Nilufer / Bursa / Turkey

Tel : +90 224 242 2100(pbx)

Fax : +90 224 243 8525

## Description

- Any kind of mdf and chipboard edge band Perfect stick with hotmelt glue
- Colorized opaque base
- Original wood pattern and colors
- Excellent protection to physical damages Decorative outlook

## Specifications

**Color** : Due to the fact that sample and the actual product have been produced at different times, there will be slight color variation.

**Color Fastness** : All our products are printed with inks with woolscale of 6-8.

**Hotmelt** : Approximately 130 gr of hotmelt is applied to one square meter of edgebanding.

Characteristics	Test Standard	Tece PP edgeband
Shore hardness D	DIN 53 505/ISO 868	81 ± 3
Resistance to warping under heat Vicat B 50	DIN 53 460 / ISO 306	100 ± 2°C
Width	-	X* mm ± 0,5mm
Thickness	-	0,40 mm + 0,02 / - 0,04
Resistance to Chemicals	TSEN12720/TS 4980	Very Good
Static Charge	-	Low
Paint and varnishes Cross cut test	TS EN ISO 2409	Table 1- Classification of test results - Classification 1
Surface quality	-	Super matt to high sheen
Resistance to scratch	TS 4757	≥ 1,5 Newton



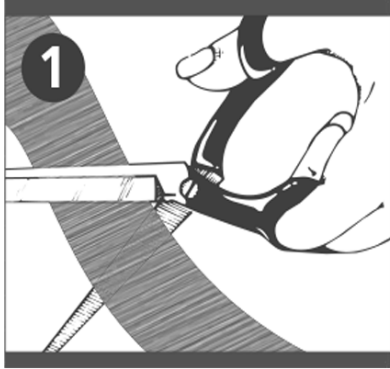


## Available Sizes

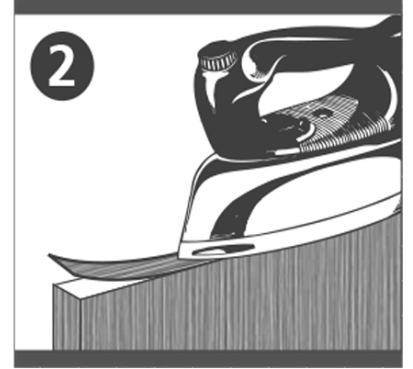
The width of the edge banding can be changed based on the customer demand (such as 18mm, 22mm, 38mm or etc). The standard length of the roll is 50m. It can also be changed if requested.



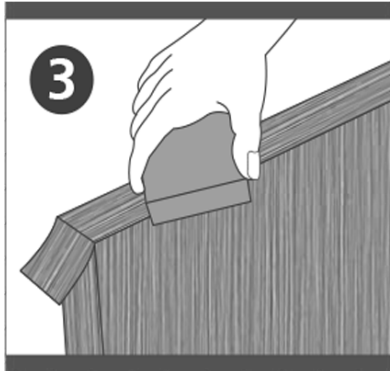
## Application Instructions



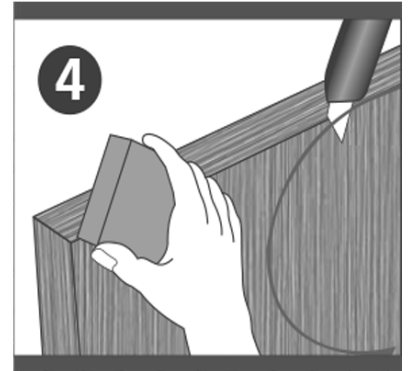
**1.** Cut the edgebanding 3 cm longer than surface to be covered. Make sure the surface is dust-free, clean, and dry. Also check to see there are no rough spots on the surface.



**2.** Apply the edgebanding with hot iron or hot air blower as described. It is recommended to use paper to protect iron bottom.



**3.** While still hot, press firmly with a wood block to the board.



**4.** Allow the edgebanding to cool completely, remove the extra edges with a trimmer or a cutting blade and sand the edges.

This pre-glued PVC edgebanding can be applied to the board with a hot iron or hot air blower. A minimum temperature of 120°C- 130°C is required to get a correct bonding effect. For an electrical iron, adjust the temperature to wool / silk / cotton range; and make sure that you hold the iron for 2-5 seconds. If the iron is held too long or the temperature in the iron is too high, you will deform the product. As for hot air blower, adjust the temperature to 120°C- 130°C.

If you apply edgebanding as described, it will keep its integrity up to temperature of 60°C-65°C. Following the instructions will result in the best edgebanding experience.



## Packaging

Each 5 rolls are shrink-wrapped with plastic nylon. The standard box dimensions are 29cm x 29cm x h : 44cm.

Each pallet takes 60 boxes.