



Technical Specifications Pre-Glued Melamine Edgebanding

Product Name

Pre-glued Melamine Edgebanding

Producer

TECE Dekor A.S.

BOSB 75. Yil Bulvari No:12 Nilufer / Bursa / Turkey

Tel : +90 224 242 2100(pbx)

Fax : +90 224 243 8525

Description

Melamine edgebanding consists of a single layer resin saturated paper which has been printed, lacquered and preglued. TECE edgebanding is used to cover the edges of furniture. With the edgebanding, the end product will look better and will have a longer durability.

Specifications

Color : Due to the fact that sample and the actual product have been produced at different times, there will be slight color variation.

Color Fastness : All our products are printed with inks with woolscale of 6-8.

Surface : The smoothness of the surface is always measured by eye. Visual testing should be done by holding the product at least 60cm away from the spectator. The surface is resistant to abrasion and chemicals.

Heat Resistance Test : all products are tested to assure to have heat resistance with an iron of 170-180 °C.

Hotmelt : Approximately 250 gr of hotmelt is applied to one square meter of edgebanding.

Available Sizes

The width of the edge banding can changed based on the customer demand (such as 18mm, 22mm, 38mm or etc). The standard length of the roll is 50mt. It can also be changed if requested.

Characteristics

Melamine edgebanding is durable and it can be colored or printed. The application of it is very easy and simple. It has good abrasion to resistance and heat.





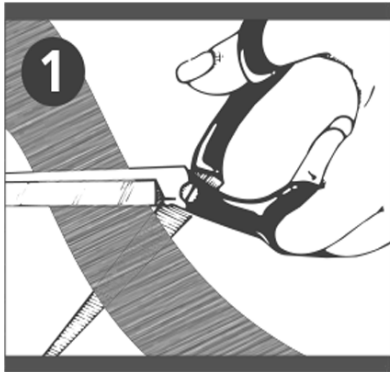
Application Instructions

Dimension of the box changes as the width of the product changes.
The standard box dimensions are here below.

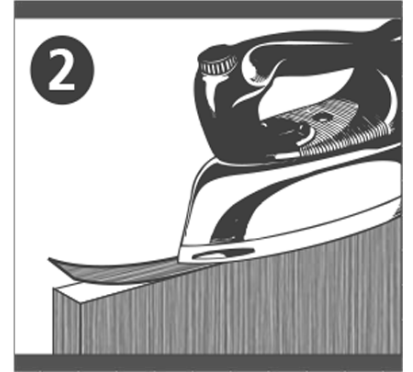
Use **Tece 3 in 1 Trimmer** for the best bonding result. Watch how to use 3 in 1 Trimmer



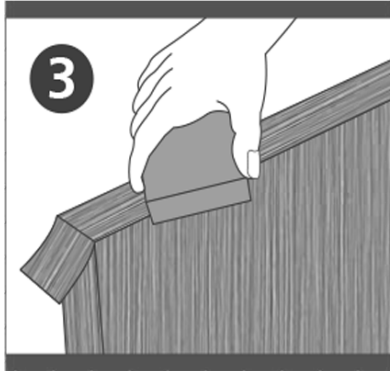
https://www.youtube.com/watch?v=gVYNGm_qaE0



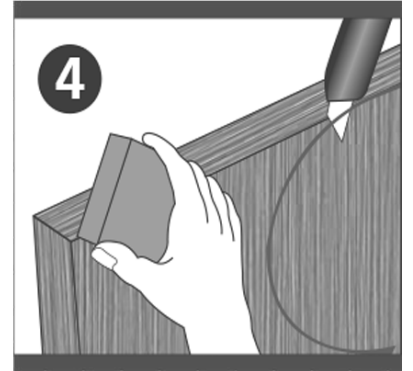
1. Cut the edgebanding 3 cm longer than surface to be covered. Make sure the surface is dust-free, clean, and dry. Also check to see there are no rough spots on the surface.



2. Apply the edgebanding with hot iron or hot air blower as described. It is recommended to use paper to protect iron bottom.



3. While still hot, press firmly with a wood block to the board.



4. Allow the edgebanding to cool completely, remove the extra edges with a trimmer or a cutting blade and sand the edges.

This edgebanding can be applied to the board with a hot iron or hot air blower. A minimum temperature of 150°C - 175°C is required to get a correct bonding effect. For an electrical iron, adjust the temperature to wool/silk/cotton range; and make sure that you hold the iron for 10-15 seconds. If the iron is held too long or the temperature in the iron is too high, you will evaporate the hotmelt and the product will not stick to the board. As for hot air blower, adjust the temperature to 170°C - 190°C.

If you apply edgebanding as described, it will keep its integrity up to temperature of 60°C-65°C. Following the instructions will result in the best edgebanding experience.



Packaging

Each 5 rolls are shrink-wrapped with plastic nylon. The standard box dimensions are 29cm x 29cm x h : 44cm.

Each pallet takes 60 boxes.